

## FE-201DM shows no screen in CoreNVR split screen?

1. Please make sure the CoreNVR Version is at or above **2.0.0.1492**.

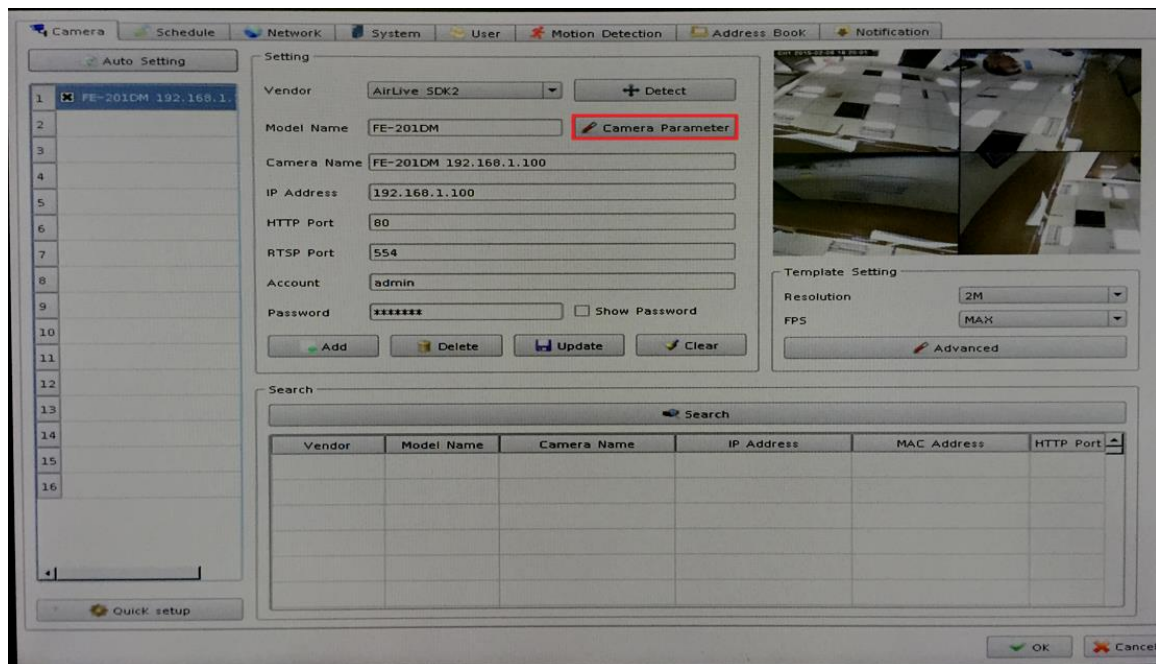
<http://www.airlive.com/support/firmware/CoreNVR-16>

<http://www.airlive.com/support/firmware/CoreNVR-9>

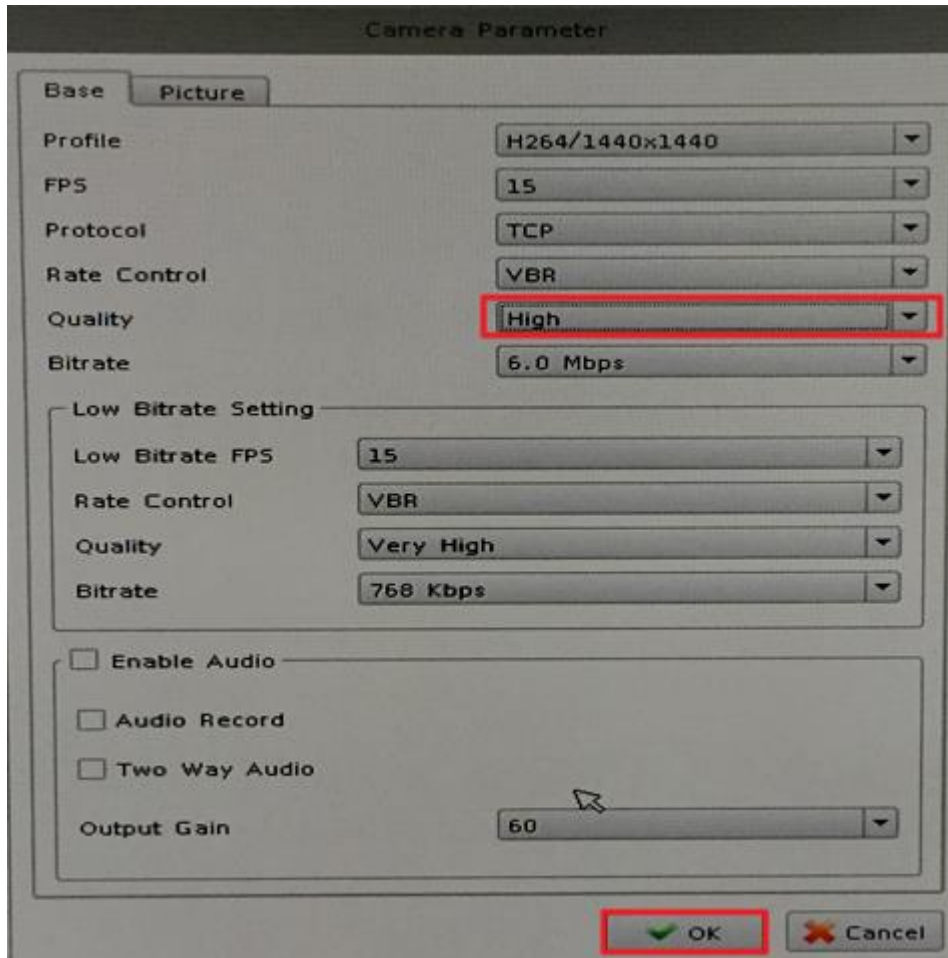
2. Enter “System setting”.



3. Enter FE-201DM “Camera Parameter”.



4. Change the video quality to “high”.



5. When finished configurations above then you may see the Live view on the split screen.

